



REC-02 Radome Entry Control Module

Switch controlled safety device designed to inhibit antenna motion

Orbital Systems Radome Entry Control Module is designed to inhibit antenna motion while accessing confined spaces such as radomes. Installed just inside the access hatch of a radome, it is easily reached before entry and serves to maximize the safety of personnel as they enter and work in the confines of a radome.

Features

A switch controlled safety device used to prevent antenna motion as personnel enter and work inside constricted radome spaces.

Operational Highlights

- The unit is attached to a bracket and positioned just inside the radome access hatch
- The hatch need only be opened a few centimeters to reach the Off switch
- A warning label affixed to the hatch exterior draws attention to the switch just inside the hatch
- To enter the radome, push the hatch open a few centimeters and press the switch into the Off position inhibiting antenna motion
- The switch is labeled On / Off and is illuminated for easy identification in darkness
 - Blue - illumination indicates that the positioner is Enabled
 - Red - illumination indicates that the positioner is Disabled
- When the switch is in the On (blue illuminated) position, the control module system allows the antenna to power up and motion is possible



Applications

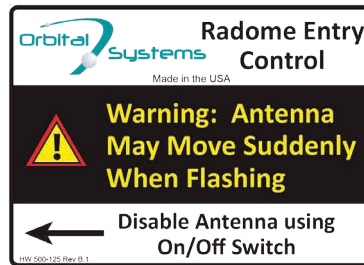
- Safe access to antenna systems inside confined spaces such as radomes

Configurations

- Right-hinged hatch
- Left-hinged hatch
- Floor-access

Entry Control Module

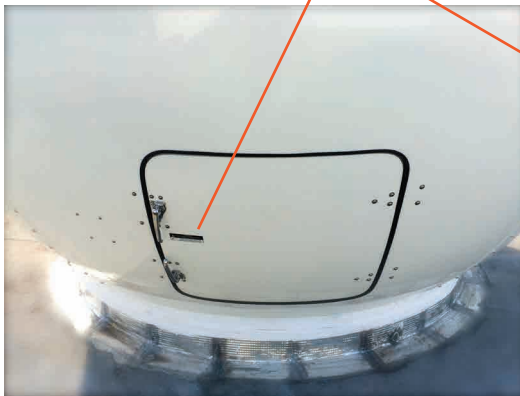
- Serves to maximize the safety of personnel as they enter and work in the confined space of a radome
- Installed just inside the radome access hatch
- Extending from the module is a cable that plugs into the lower main bulkhead of the antenna positioner
- To insure the data cable does not become a trip hazard, it is recommended a rubber cable cover strip be used, or holes be drilled into the radome deck allowing the cable to be run under the deck to the electrical cabinet on the positioner



Radome Entry Control Module Label



Exterior Radome Warning Label



Exterior Radome Warning Label

- A warning label is applied to the exterior of the radome access hatch to remind personnel to use the entry control module to disable movement of the antenna

Switch

- The illuminated switch is positioned on the side of the control module and is placed just inside the radome access hatch for easy access
- The switch is easily confirmed to be in the correct position based on the illumination color
 - Blue - illumination indicates that the positioner is Enabled
 - Red - illumination indicates that the positioner is Disabled

Switch

